

# Welwyn Garden City

Hertfordshire

As part of Phase 1 of this project, we carried out works on 66 properties, with each close individually showcased for your review. We assessed the insulation and roofing of each dwelling, stripping existing waterproofing back to the deck and carrying out replacements where necessary to ensure long-term performance..

## POUNDWELL



### Project Overview

Duration: 5 Months  
Area: 3300m<sup>2</sup>, 66 Properties  
Insulation replacement  
New Waterproofing System  
Pitched Roofing  
20 Year Guarantee



# Welwyn Garden City

Hertfordshire

As part of Phase 1 of this project, we carried out works on 66 properties, with each close individually showcased for your review. We assessed the insulation and roofing of each dwelling, stripping existing waterproofing back to the deck and carrying out replacements where necessary to ensure long-term performance..

**HAYNES**



## Project Overview

Duration: 5 Months  
Area: 3300m<sup>2</sup>, 66 Properties  
Insulation replacement  
New Waterproofing System  
Pitched Roofing  
20 Year Guarantee

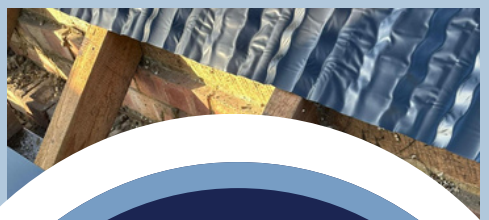
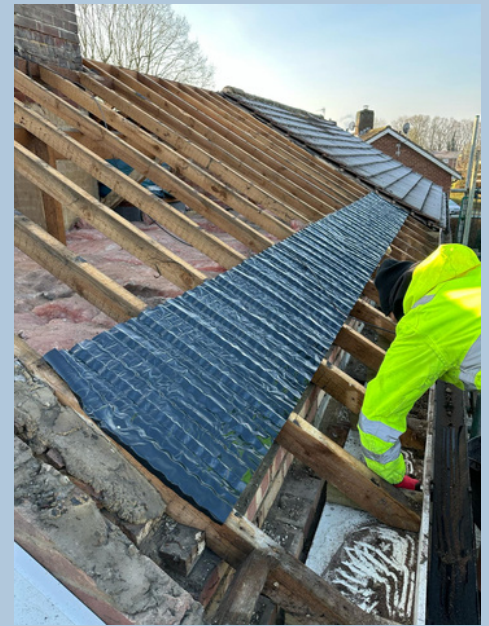


# Welwyn Garden City

Hertfordshire

As part of Phase 1 of this project, we carried out works on 66 properties, with each close individually showcased for your review. We assessed the insulation and roofing of each dwelling, stripping existing waterproofing back to the deck and carrying out replacements where necessary to ensure long-term performance..

## KNELLA



### Project Overview

Duration: 5 Months  
Area: 3300m<sup>2</sup>, 66 Properties  
Insulation replacement  
New Waterproofing System  
Pitched Roofing  
20 Year Guarantee

"Phase 2 is currently ongoing. This phase includes the reroofing of 16 blocks of flats and 105 individual properties."